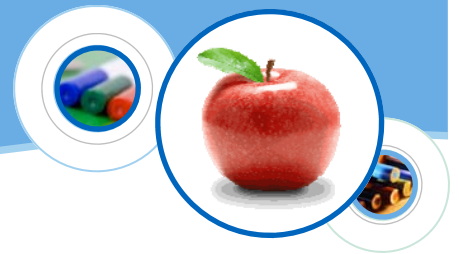


# WILSON ELEMENTARY SCHOOL

*Working To Be Our Best, Every Day!*



## GRADES K-6

3775 Bodega Avenue Petaluma, CA 94952  
Phone: (707) 765-4340 Fax: (707) 765-4342  
Web site: [www.wilsonschoolpetaluma.org](http://www.wilsonschoolpetaluma.org)

**Eric Hoppes**  
Superintendent/Principal

## 2007-08 School Accountability Report Card

Published During the 2008-09 School Year

### Principal's Message

Wilson Elementary School has a wonderful reputation as an engaging environment for children to develop academically as well as socially and emotionally. The staff, students, and the parent community are committed to a high standard of academics and character education. Our Academic Performance Index (API) score of 850 for the 2007-08 school year validates this commitment and work. We are very proud of this academic success, but are equally proud of how our students continue to succeed in their educational pursuits.

To encourage good academics and positive social behavior, students are chosen as Students of the Month and are recognized at our monthly Board of Education meetings. Students are also recognized by teachers at our weekly assembly for displaying good character traits through our "WOW" program (Wilson's Outstanding Wildcats). The statistics you will see on the following pages tell only part of the story. We invite you to come and visit Wilson School and see how our small learning community is a wonderful place for children to grow into responsible, thoughtful, and happy community members. Come and see how a small, rural school is preparing its students to become intelligent, hard working, and responsible citizens.

### Parental Involvement

Parents are encouraged to take an active role in school and we are pleased to have so many parent volunteers. Some parents volunteer in our classrooms while others find alternative ways to support their children in Wilson School. They support our learning environment by assisting with field trips, extracurricular activities, fund raising, and campus beautification. We have a strong and supportive Parent Teacher Association. They help with fundraising and social events as well as coordinating dinners at our Back-to-School Night and our Open House. Parents also serve on our Board of Education and our School Site Council (SSC).

For more information on how to become involved, contact Susie Clark or Jill Sirois, Co-Chairs of our PTA, at (707) 765-4340.

### School Safety

Safety of students and staff is a primary concern of Wilson Elementary School. The School Safety Plan was last reviewed and updated on September 10, 2008. Key elements of the plan include safety drills, earthquake drills, fire drills, and crisis intervention plans. Parents can access the Safety Plan in the school office.

### Public Internet Access

Wilson Elementary School provides internet access for students in the school library and in the classrooms.

Internet access is available at public libraries and other locations that are publicly accessible (e.g., the California State Library). Access to the Internet at libraries and public locations is generally provided on a first-come, first-served basis. Other use restrictions include the hours of operation, the length of time that a workstation may be used (depending on availability), the types of software programs available on a workstation, and the ability to print documents.



### School Mission Statement

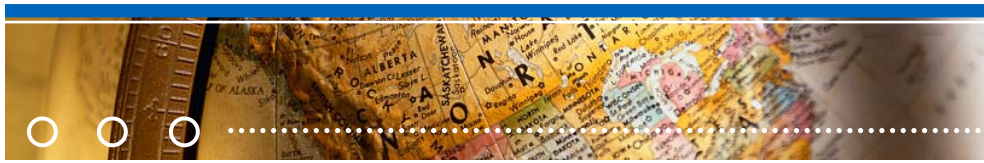
We, the Wilmar Union Elementary School District, in partnership with our parents and our community, lay the foundation of our children's education.

We hold our students, and ourselves, to high standards by providing high quality instruction and materials.

We assess our students' reading, writing, mathematics, science, and social studies skills and then teach them so that they may reach their highest academic potential.

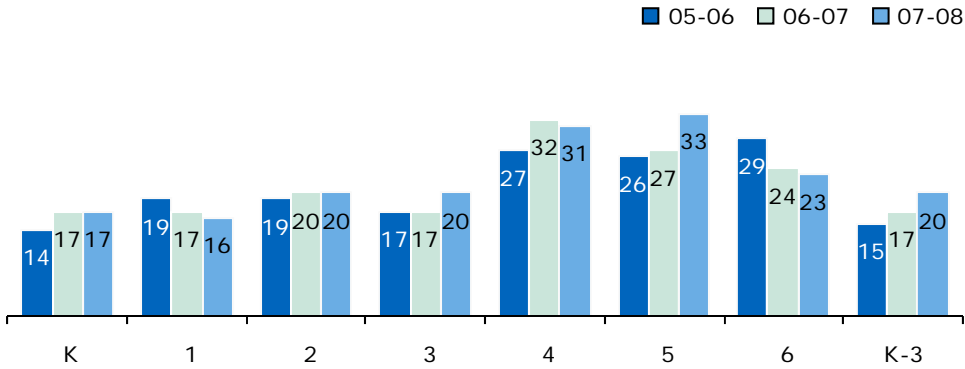
We create a safe caring environment in which children can develop well-rounded interests and a lifelong love of learning.





### Class Size

The bar graph displays the three-year data for average class size.



Class Size Distribution — Number of Classrooms By Size									
Grade	05-06			06-07			07-08		
	1-20	21-32	33+	1-20	21-32	33+	1-20	21-32	33+
K	1			2			2		
1	1			1			2		
2	2			1			1		
3	2			2			1		
4		1			1			1	
5		1			1				1
6		1			1			1	
K-3	1			1			1		

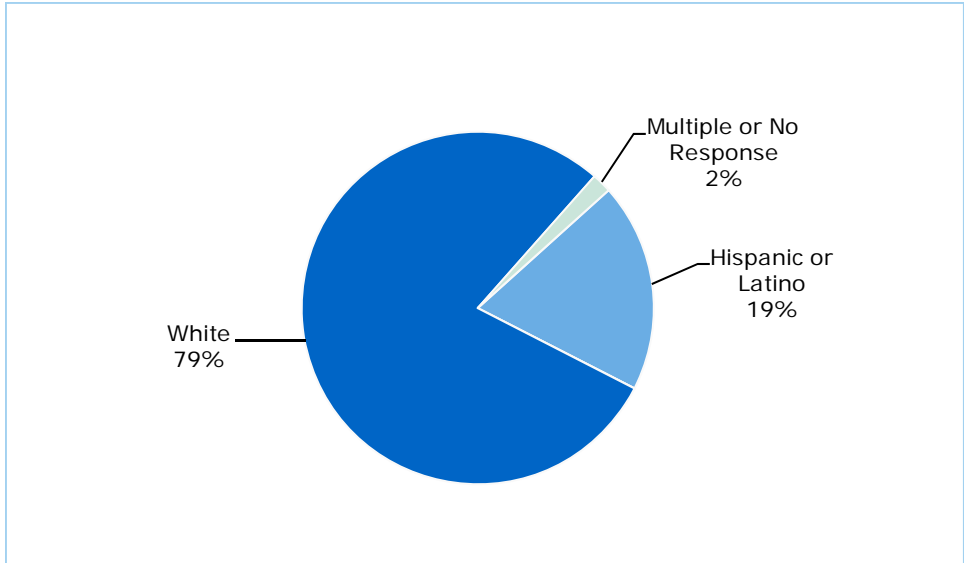
### Professional Development

Wilmar Union Elementary School District devotes three days each school year to teachers' professional development. Three teachers form a team called the Professional Learning Community. This group, along with the administration, works collaboratively with the teaching staff to choose the focus for staff development. This year's focus is reading; trainings have focused on the teaching technique of Guided Reading. The past few years, the focus has been on the Six Traits writing style. This schoolwide approach has been very instrumental in schoolwide gains in student achievement. Teachers are also encouraged to participate in workshops, conferences, and other training that is tailored to their specific classroom assignments and which will enhance their instructional practices.

Teachers new to the profession participate in the Beginning Teacher Support and Assessment (BTSA) program, designed to support new teachers through training and individual coaching.

### Enrollment and Demographics

The total enrollment was 224 students for the 2007-08 school year.





## School Facility Good Repair Status

The table shows the results of the school's most recently completed inspection, using the Facility Inspection Tool (FIT) or equivalent school form. This inspection determines the school facility's good repair status.

School Facility Conditions and Improvements				
Item Inspected	Repair Status			
	Good	Fair	Poor	
Gas Leaks	✓			
Mechanical Systems	✓			
Windows/Doors/Gates (interior and exterior)	✓			
Interior Surfaces (walls, floors, and ceilings)	✓			
Hazardous Materials (interior and exterior)	✓			
Structural Damage	✓			
Fire Safety	✓			
Electrical (interior and exterior)	✓			
Pest/Vermin Infestation	✓			
Drinking Fountains (inside and outside)	✓			
Restrooms	✓			
Sewer	✓			
Playground/School Grounds	✓			
Roofs	✓			
Overall Cleanliness	✓			
Overall Summary of Facility Condition				
	Exemplary	Good	Fair	Poor
Overall Summary	✓			

Note: The most recent school site inspection occurred on October 9, 2008, and the inspection form was most recently completed on October 9, 2008.

## School Facilities

Wilson Elementary School was established in 1863. Our current buildings were erected in 1957 and modernized in 2003. The school has 11 regular classrooms, a library, a computer lab, a multipurpose room, and three portable classrooms used for instruction. Athletic facilities include two updated playgrounds, a soccer/football field, and a newly developed baseball field with a track around it.

All facilities are kept in safe and clean condition. Buildings and grounds are clean and routinely inspected, maintained, repaired or upgraded as needed. Landscaping is currently being improved and there have been modernization projects in the last three years which have included a new roof for our school.

Wilson Elementary School has an important water project that is nearing completion. We plan to have a domestic use water line connected to the City of Petaluma before the start of the 2009-10 school year. This is a million-dollar project that has been approved for State funding and we are nearing the bid process.

*Continued on sidebar*

## School Facilities

*Continued from left*

The District participates in the State School Deferred Maintenance Program, which provides State-matching funds on a dollar-for-dollar basis, to assist school districts with expenditures for major repair or replacement of existing school building components. Typically, this includes roofing, plumbing, heating, air conditioning, electrical systems, interior or exterior painting, and floor systems. For the 2008-09 school year, the District budgeted \$9,045 for the Deferred Maintenance Program. This represents 0.5% of the District's general fund budget.



## California Physical Fitness Test

Each spring, all students in grades 5, 7, and 9 are required to participate in the California Physical Fitness Test (PFT). The test measures six key fitness areas:

1. Aerobic Capacity
2. Body Composition
3. Abdominal Strength
4. Trunk Extension Strength
5. Upper Body Strength
6. Flexibility

To meet fitness standards, students must score in the Healthy Fitness Zone (HFZ) on all six fitness tests. For 2007-08, 22.19% of students in the fifth grade scored in the HFZ. For more information on the California PFT, please visit [www.cde.ca.gov/ta/tg/pf/](http://www.cde.ca.gov/ta/tg/pf/).



## Textbooks and Instructional Materials

Wilmar UESD Textbooks and Instructional Materials List		
Subject	Textbook	Adopted
English-Language Arts	Houghton Mifflin	2003-04
Mathematics	Harcourt	2004-05
Science 6 <sup>th</sup>	Prentice-Hall	2007-08
Science K-5	Macmillan/McGraw-Hill	2007-08
History-Social Science	Houghton Mifflin	2006-07

### Textbooks and Instructional Materials

Wilson Elementary School ensures that each pupil has his/her own copies of the Standards-aligned textbooks approved by the State Board of Education, and access to instructional materials in the core curriculum areas that support the school's instructional programs of reading/language arts, math, science, and history/social science. Our strong academic program is supplemented with instruction in music and physical education.

Wilson Elementary provides students with several extracurricular opportunities to participate in visual and performing arts classes, such as after-school music classes, ceramics, and Gifted and Talented Education (GATE). Students have access to all materials needed for visual and performing arts classes. Internet access is available as an instructional tool in our library and in classrooms.

## Availability of Textbooks and Instructional Materials

Availability of Textbooks and Instructional Materials	
Subject	Percentage of Pupils Who Lack Their Own Assigned Textbook and Instructional Materials
Reading/Language Arts	0%
Mathematics	0%
Science	0%
History-Social Science	0%
Visual and Performing Arts	0%
Foreign Language	✧
Health	0%

Note: This data was most recently collected and verified in September 2008.

✧ Not applicable.

## Suspensions and Expulsions

The table shows the rate of suspensions and expulsions (the total number of incidents divided by the school's total enrollment) for the most recent three-year period.

Suspension and Expulsion Rates						
	Wilson ES			Wilmar UESD		
	05-06	06-07	07-08	05-06	06-07	07-08
Suspension Rate	0.005	0.010	0.893	0.005	0.010	0.893
Expulsion Rate	0.000	0.000	0.000	0.000	0.000	0.000



Library





## California Standards Tests Results

The multiple-choice California Standards Tests (CST) are part of the Standardized Testing and Reporting (STAR) and are administered only to students in California public schools. These tests determine students' achievement of the California Academic Content Standards and provide feedback on their success given what they are expected to know in each grade level and subject.

Percentage of Students Scoring At Proficient or Advanced Levels									
	Wilson ES			Wilmar UESD			California		
	05-06	06-07	07-08	05-06	06-07	07-08	05-06	06-07	07-08
English-Language Arts	58%	55%	63%	58%	55%	63%	42%	43%	46%
Mathematics	63%	63%	69%	63%	63%	69%	40%	40%	43%
Science	46%	62%	76%	46%	62%	76%	35%	38%	46%

## CST Student Group Results: English-Language Arts, Mathematics, and Science

Percentage of Students Scoring At Proficient or Advanced Levels			
Group	Spring 2008 Results		
	English-Language Arts	Mathematics	Science
Male	50%	62%	84%
Female	66%	78%	60%
Economically Disadvantaged	44%	46%	❖
English Learners	43%	50%	❖
Students with Disabilities	19%	37%	❖
Migrant Education Services	❖	❖	❖
African American	❖	❖	❖
American Indian or Alaska Native	❖	❖	❖
Asian	❖	❖	❖
Filipino	❖	❖	❖
Hispanic or Latino	41%	45%	❖
Pacific Islander	❖	❖	❖
White	69%	76%	80%

❖ Scores are not shown when the number of students tested is 10 or less, either because the number of students tested in this category is too small for statistical accuracy or to protect student privacy.

## California Standards Tests

For the 2008 STAR exam, students in grades 2-11 took an English-language arts and mathematics test. Students in grades 4 and 7 also participated in an essay writing test. History-social science tests were given to students in grades 8 and 11, and students in grades 5, 8, and 10 took a science test. Students in grades 9-11 were also able to take end-of-course tests in science and history-social science if they were enrolled in the corresponding courses.

Because tests are meant to measure how well students achieve standards rather than how well they do compared to other students, the results are reported as performance levels. The five performance levels are:

- **Advanced** (*exceeds State Standards*)
- **Proficient** (*meets Standards*)
- **Basic**
- **Below basic**
- **Far below basic**

Students scoring at the Proficient or Advanced level meet State Standards in that content area.

The tables show the percentage of students that scored at Proficient or Advanced levels in English-language arts, mathematics, and science. For a complete report on all groups and their scores by grade level, please visit <http://star.cde.ca.gov/>.





## Adequate Yearly Progress

Adequate Yearly Progress Criteria				
	Wilson ES		Wilmar UESD	
Met Overall AYP	Yes		Yes	
AYP Criteria	English-Language Arts	Mathematics	English-Language Arts	Mathematics
Participation Rate	Yes	Yes	Yes	Yes
Percent Proficient	Yes	Yes	Yes	Yes
API	Yes		Yes	
Graduation Rate	✧		✧	

✧ Not applicable. The graduation rate for AYP criteria applies to high schools.

## Academic Performance Index

API Ranks — Three Year Comparison			
	04-05	05-06	06-07
Statewide API Rank	7	7	6
Similar Schools API Rank	2	2	1

API Growth by Student Group — Three Year Comparison				
Group	Actual API Change			2007-08 Growth API Score
	05-06	06-07	07-08	
All Students at the School	14	-4	60	850
African American	■	■	■	■
American Indian or Alaska Native	■	■	■	■
Asian	■	■	■	■
Filipino	■	■	■	■
Hispanic or Latino	■	■	■	■
Pacific Islander	■	■	■	■
White	26	-11	41	874
Socioeconomically Disadvantaged	■	■	■	■
English Learners	■	■	■	■
Students with Disabilities	■	■	■	■

■ Data are reported only for numerically significant groups.

## Adequate Yearly Progress

NCLB requires that all schools and districts meet Adequate Yearly Progress (AYP) requirements. To meet these standards, California public schools and districts must meet or exceed criteria in four target areas:

1. Participation rate on statewide assessments
2. Percent of students scoring proficient on statewide assessments
3. API scores
4. Graduation rate for high schools

The table displays whether or not the school made AYP overall and met each of the AYP criteria for 2007-08. For a detailed report on AYP, please visit [www.cde.ca.gov/ta/ac/ay/](http://www.cde.ca.gov/ta/ac/ay/).

## Academic Performance Index

The Academic Performance Index (API) is an annual measure of the academic performance and progress of schools in California. The API is a score on a scale of 200 to 1,000, with 800 set as the statewide target. Schools are ranked in ten categories of equal size from 1 (lowest) to 10 (highest). A similar schools API rank reflects how a school compares to 100 statistically matched "similar schools." The tables show the school's three-year data for API rank and API growth. For more detailed information, please visit [www.cde.ca.gov/ta/ac/ap/](http://www.cde.ca.gov/ta/ac/ap/).

**Testing Note:** Assessment data are reported only for numerically significant groups. Data may not appear if ethnic/racial, socio-economically disadvantaged, or other groups (1) contain less than 100 students with valid test scores OR (2) comprise less than 15% of the school population tested and contain less than 50 students with valid scores.



## Teacher Qualifications

Teacher Credential Information				
	Wilmar UESD	Wilson ES		
Teachers	07-08	05-06	06-07	07-08
With Full Credential	12	12	12	12
Without Full Credential	0	0	0	0
Teaching Outside Subject Area of Competence		0	0	0



## Teacher Qualifications

The table shows information about teacher credentials and teacher qualifications. More information can be found by visiting <http://data1.cde.ca.gov/dataquest/>.

## Teacher Misassignments and Vacant Teacher Positions

The table displays the number of teacher misassignments (teachers assigned without proper legal authorization) and the number of vacant teacher positions (not filled by a single designated teacher assigned to teach the entire course at the beginning of the school year or semester). Please note: Total teacher misassignments includes the number of misassignments of teachers of English Learners.

Teacher Misassignments and Vacant Teacher Positions			
	Wilson ES		
	06-07	07-08	08-09
Teacher Misassignments of English Learners	0	0	0
Total Teacher Misassignments	0	0	0
Vacant Teacher Positions	0	0	0



Computer Lab

## School Support Staff

The following is a list of the support staff at the school and their full-time equivalent (FTE):

- Library Media Teacher (Librarian) 0.0
- Library Media Services Staff (paraprofessional) 1.0
- Psychologist 0.1
- Social Worker 0.0
- Nurse 0.1
- Speech/Language/Hearing Specialist 0.3
- Resource Specialist (non-teaching) 1.0
- Other (Counselor, Special Day Class) 1.2

## No Child Left Behind Compliant Teachers

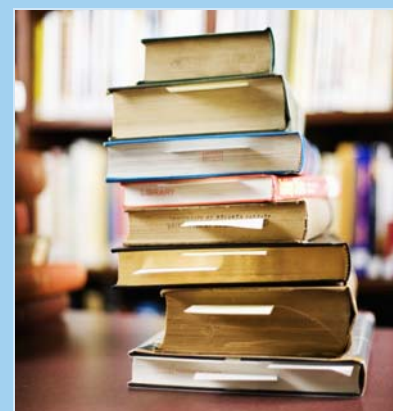
No Child Left Behind (NCLB) requires that all teachers of core academic subject areas be "highly qualified." In general, for a teacher to be considered highly qualified, they must have a bachelor's degree, an appropriate California teaching credential, and have demonstrated competence for each core subject he or she teaches. The table displays data regarding NCLB compliant teachers from the 2007-08 school year. For more information on teacher qualifications related to NCLB, please visit [www.cde.ca.gov/nclb/sr/tq](http://www.cde.ca.gov/nclb/sr/tq).

Core Academic Courses Taught by NCLB Compliant Teachers		
	% of Classes Taught by NCLB Compliant Teachers	% of Classes Taught by Non-NCLB Compliant Teachers
Wilson ES	100.0%	0.0%
All Schools in District	100.0%	0.0%
High-Poverty Schools in District	◇	◇
Low-Poverty Schools in District	◇	◇

◇ Information not available.

## Academic Counselors

Number of Academic Counselors (FTE)	Ratio of Students Per Academic Counselor
0	0





## Federal Intervention Program

Schools that receive Title I funding can enter Program Improvement (PI) if they don't reach AYP over two consecutive years in the same content area (English-language arts or mathematics) or on the same indicator (API or graduation rate). With each additional year that they don't meet AYP, they advance to the next level of intervention. The table displays the 2008-09 Program Improvement status for the school and district. For more information, please visit [www.cde.ca.gov/ta/ac/ay](http://www.cde.ca.gov/ta/ac/ay).

Federal Intervention Program		
	Wilson ES	Wilmar UESD
Program Improvement Status	Not In PI	Not In PI
First Year of Program Improvement	✧	✧
Year in Program Improvement	✧	✧
Number of Schools Identified for Program Improvement		0
Percent of Schools Identified for Program Improvement		0%

✧ Not applicable.

## Financial Information

The data displayed is from the 2006-07 school year because the most current fiscal information available provided by the state is always two years behind the current school year, and one year behind most other data included in this report.

District Salary Information — Does not include benefits		
Range	Wilmar UESD	Similar Sized District
Beginning Teacher Salary	\$41,854	\$37,322
Mid-Range Teacher Salary	\$54,935	\$53,824
Highest Teacher Salary	\$67,588	\$67,700
Average Principal Salary	✧	\$85,507
Superintendent Salary	\$101,132	\$104,993
% of Budget for Teacher Salaries	39.9%	37.6%
% of Budget for Administrative Salaries	5.5%	6.4%

Financial Data				
	Total Expenditures Per Pupil	Expenditures Per Pupil From Restricted Sources	Expenditures Per Pupil From Unrestricted Sources	Average Teacher Salary
Wilson ES	\$8,701	\$2,602	\$6,099	\$53,530
Wilmar UESD			\$6,099	\$53,530
California			\$5,300	\$54,322
% Difference Between School and District			◆	◆
% Difference Between School and California			13.1%	1.5%

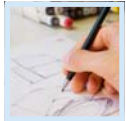
✧ Single-site districts are not required to display this data. (*Education Code* Section 41409.3).

◆ The Principal and Superintendent are combined as one position for Wilson Elementary School.

## Types of Services Funded

The following is a list of Federal and State funded programs that are provided to students:

- Title I (Basic Grant)
- Title I (Migrant Education)
- Title II (Technology)
- Title III (for Limited English Proficient Students)
- Title IV (Safe and Drug-Free Schools and Communities)
- Title V (Innovative Programs)
- Economic Impact Aid/Limited English Proficient (EIA/LEP)
- Gifted and Talented Education (GATE)
- Beginning Teacher Support and Assessment (BTSA)
- Class Size Reduction (CSR)
- Hourly Programs (extended day/year education)
- School Improvement Program (SIP)
- Special Education
- School Library Grant
- National School Lunch Program



**SARC:** Data provided by the California Department of Education (CDE), school and the district office. For additional information on facts about California schools and districts, please visit DataQuest at <http://data1.cde.ca.gov/dataquest>. Data-Quest is an online resource that provides reports for accountability, test data, enrollment, graduates, dropouts, course enrollments, staffing and data regarding English Learners.

All data accurate as of November 2008.